

CONSTRUCTION LABOR COSTS

THE HARD FACTS ABOUT CONCRETE FLOORS "Traditional Local Style Floors and ANCON's Worlds Best Practice"

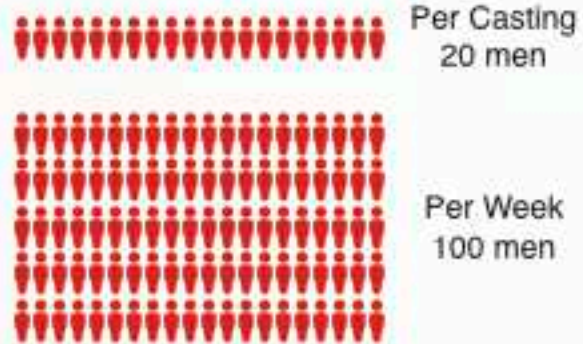
LOCAL PRACTICE 1

in SE Asia

Casting Narrow Strips And One Per Day

Day 1 Casting 1 x5

Total Per Week 900 m²



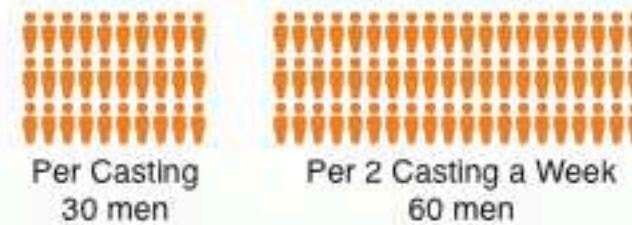
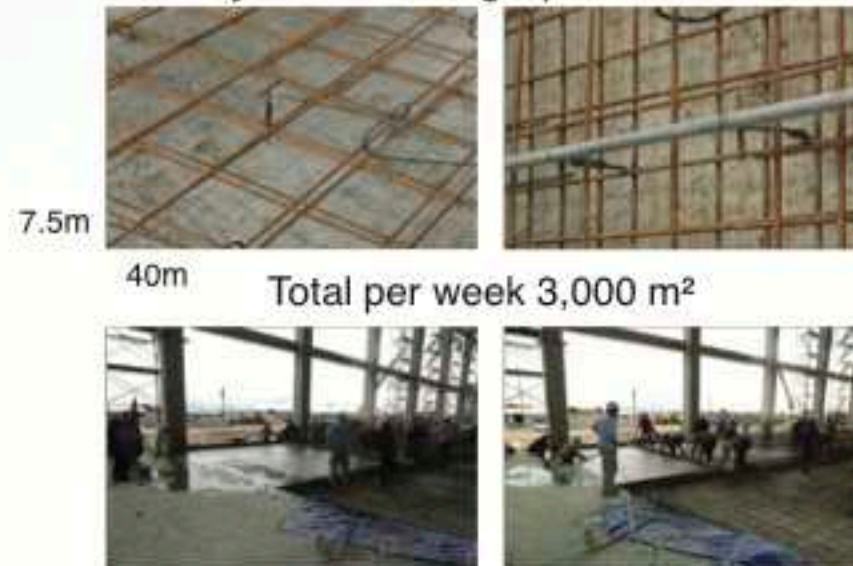
Cost / week 100 x US\$12 / day = US\$1,200 / week
Cost / m² labour = US\$0.80/m²

LOCAL PRACTICE 2

in SE Asia

Setting Up Guide Rails

Day 1 & 2: Setting Up Guide Rails

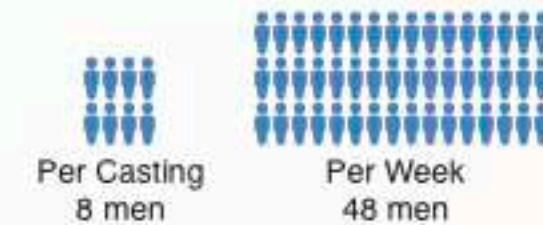
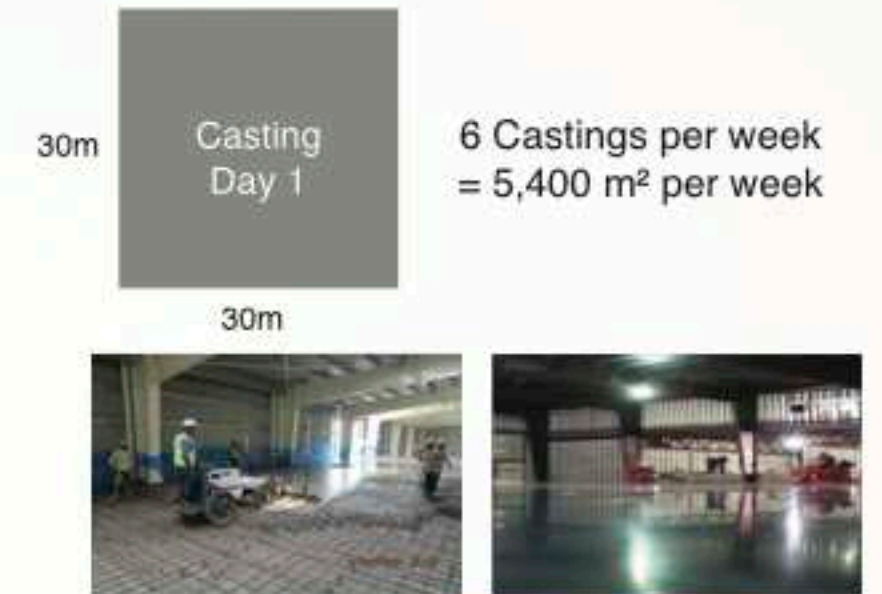


Cost / week 60 x US\$12 / day = US\$720 / week
Cost / m² labour = US\$0.24/m²

ANCON FLOOR PRACTICE

in SE Asia

THE VALUE PROPOSITION
Setting Up Wide Form Casting of 30m x 30m



Cost / week 48 x US\$12 / day = US\$576 / week
Cost / m² labour = US\$0.11/m²

