

PRODUCTIVITY

LOCAL PRACTICE 1

in SE Asia

Casting Narrow Strips and one per day with Truss or Beam Screen

Day 1	Casting 1	6m 30m
Day 2	Casting 2	
Day 3	Casting 3	
Day 4	Casting 4	
Day 5	Casting 5	

Total Per Week 1,500 m²

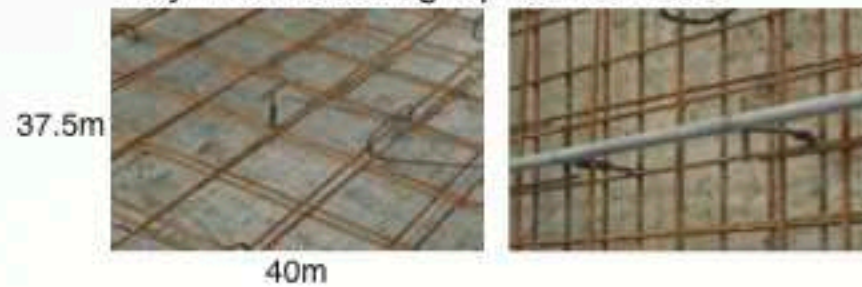


LOCAL PRACTICE 2

in SE Asia

Setting Up Guide Rails

Day 1 & 2: Setting Up Guide Rails



Day 3: Casting 1,500 m²



Day 4 & 5: Setting Up Guide Rails



Day 6: Casting 1,500 m²

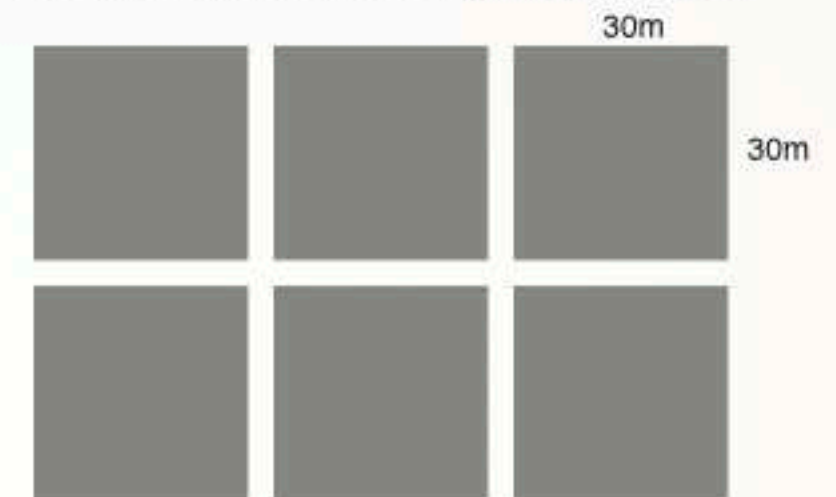


Total Per Week: 3,000 m²

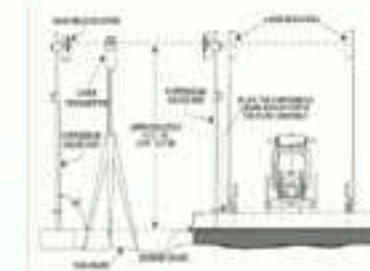
ANCON FLOOR PRACTICE

in SE Asia

Set Up Wide Form Casting of 30m x 30m



Total Per Week 5,400 m²



- The ANCON Floor**
- Double Productivity
 - Many Other Benefits
 - More Cost Effective
 - Saves Money
 - Speeds Program

